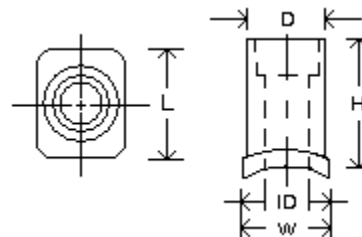


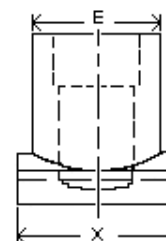
Service Saddle - Socket Outlet (Molded)



Dimensions

| IPS Main Size | Nominal Size | Package Qty | Package Weight lbs. | Rahn Part #: HDPE3408 Black |
|---------------|--------------|-------------|---------------------|-----------------------------|
| 1-¼" - 12" | ½" CTS | 10 | 2 | 3155-50C |
| 1-¼" - 12" | ½" IPS | 10 | 2 | 3155-50 |
| 1-¼" - 12" | ¾" IPS | 10 | 2 | 3155-75 |
| 1-¼" - 12" | 1" IPS | 10 | 2 | 3155-1 |

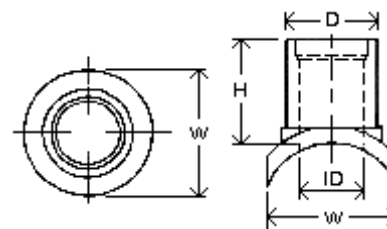
High Volume Saddle - Socket Outlet (Molded)



Dimensions

| IPS Main Size | Nominal Size | Package Qty | Package Weight lbs. | Rahn Part #: HDPE3408 Black |
|----------------|--------------|-------------|---------------------|-----------------------------|
| Starting at 2" | 1-¼" IPS | 10 | 2 | 3157-125 |

Branch Saddle - Butt Fusion Outlet (Molded)

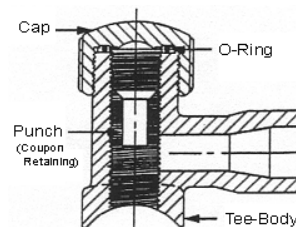


Dimensions

| IPS Main Size | Nominal Size | H | W | D | Availability | Rahn Part #: HDPE3408 Black | DR |
|---------------|--------------|-----------------|-------|-------|--------------|-----------------------------|------|
| 1-½" - 36" | 1-¼" | 5.000 | 2.160 | 1.660 | X | 3156-125 | DR9 |
| 2 - 36" | 1-½" CTS | 5.000 | 2.160 | 1.625 | X | 3156-150C | DR9 |
| 2 - 36" | 1-½" | 5.000 | 2.375 | 1.900 | X | 3156-150 | DR9 |
| 3 - 36" | 2" CTS | 5.000 | 2.750 | 2.125 | X | 3156-2C | DR11 |
| 3 - 36" | 2" IPS | 5.000 | 2.750 | 2.375 | X | 3156-2 | DR7 |
| 4 - 36" | 3" IPS | 3.750 10.000 | 4.250 | 3.500 | X F | 3156-3 | DR5 |
| 6 - 36" | 4" IPS | 5.000 10.000 | 5.000 | 4.500 | X F | 3156-4 | DR5 |
| 8 - 36" | 6" IPS | 7.000 10.750 | 7.300 | 6.625 | X F | 3156-6 | DR5 |
| 8 - 36" | 6" DIPS | 7.000 | 8.600 | 6.900 | X | 3156-6 | DR9 |
| 10 - 36" | 8" IPS | 5.500 | 9.250 | 8.625 | X | 3156-8 | DR7 |

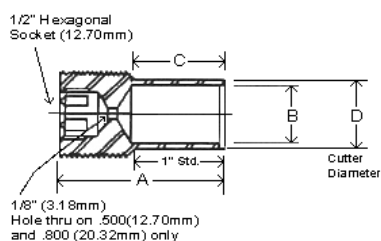
- Specify SDR Required when ordering. SDR7 and SDR5 available in some sizes.
- Availability: X - available now. F - will be available in the future.
- H - dimensions may vary slightly with the size of main diameter ordered.

Self Tapping Tees - Socket Outlet (Molded)



Dimensions

| Nominal Size | H | W | D | L | Package Qty | Package Weight lbs. (No sleeve) | Package Weight lbs. (With sleeve) |
|--------------|-------|-------|-------|-------|-------------|---------------------------------|-----------------------------------|
| ½" CTS | 3.730 | 2.440 | 1.845 | 3.940 | 10 | 6.000 | 7.700 |
| 1" CTS | 3.730 | 2.440 | 1.845 | 3.940 | 10 | 7.000 | 11.00 |
| ½" IPS | 3.730 | 2.440 | 1.845 | 3.940 | 10 | 6.000 | 8.900 |
| ¾" IPS | 3.730 | 2.440 | 1.845 | 3.940 | 10 | 6.500 | 9.400 |
| 1" IPS | 3.730 | 2.440 | 1.845 | 3.940 | 10 | 6.500 | 10.50 |
| 1-¼" IPS | 3.730 | 2.440 | 1.845 | 3.940 | 5 | 7.000 | 13.10 |



| Dim. A | Dim. B | Dim. C | Dim. D |
|---------|---------|---------|---------|
| 1.875 | .437 | 1.000 | .500 |
| 47.63mm | 11.11mm | 25.40mm | 12.70mm |
| 1.812 | .734 | 1.062 | .800 |
| 46.04mm | 18.65mm | 26.99mm | 20.32mm |

- Cap - Outside diameter - 2.450
- Self Tapping Tees are available starting at 1-¼" pipe size (saddle base radius)
- Also available Cutter Size .500 or .800. Check with factory for availability.