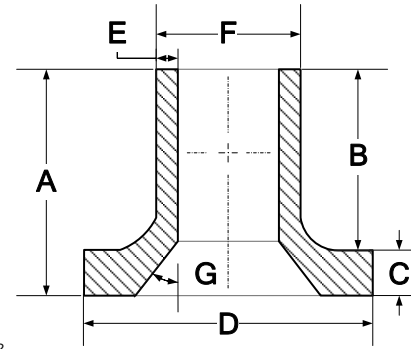


BUTT FUSION FITTINGS

B/V FLANGE ADAPTER

FOR REFERENCE ONLY



Nominal Pipe Size	A Length ¹	B Length ¹	C Flange Thickness	D Flange OD	E Inside ID	E Wall	F OD	G Angle
2" IPS	7.400"	6.950"	.490 ^{+/-0.035}	3.850" ^{+0.100}	2.250" ^{+0.060}	.216/.259	2.375" ^{+/-0.010}	45° ^{+/-1°}
mm	187.96	176.53	11.56/13.34	97.79	57.15	5.48/6.58	60.33	
3" IPS	6.025"	5.200"	.835 ^{+/-0.010}	5.000" ^{+0.050}	3.250" ^{+0.060}	.318/.382	3.500" ^{+/-0.012}	
mm	153.04	132.08	20.96/21.46	127.00	82.55	8.08/9.70	88.90	
4" IPS	6.325"	5.300"	1.000 ^{+/-0.010}	6.540" ^{+0.110}	4.250" ^{+0.060}	.409/.491	4.500" ^{+/-0.015}	
mm	160.66	134.62	24.15/25.65	166.12	107.95	10.39/12.47	114.30	
6" IPS	7.247"	6.525"	.875 ^{+/-0.025}	8.600" ^{+0.050}	6.250" ^{+0.060}	.602/.723	6.625" ^{+/-0.018}	
mm	184.08	165.74	21.59/22.86	218.44	158.75	15.30/18.36	168.28	
8" IPS	8.056"	7.125"	1.025 ^{+/-0.025}	10.700" ^{+0.050}	8.000" ^{+0.060}	.784/.941	8.625" ^{+/-0.025}	
mm	204.64	180.98	25.40/26.67	271.78	203.20	19.92/23.90	219.08	
10" IPS	11.518"	9.975"	1.535 ^{+/-0.025}	12.750" ^{+0.050}	10.000" ^{+0.060}	.977/1.173	10.750" ^{+/-0.027}	
mm	291.29	253.37	38.35/39.62	323.85	254.00	24.82/29.79	273.05	
12" IPS	12.372"	10.550"	1.825 ^{+/-0.025}	15.500" ^{+0.050}	12.000" ^{+0.060}	1.159/1.391	12.750" ^{+/-0.036}	
mm	314.24	267.97	45.72/46.99	393.70	304.80	29.44/35.33	323.85	

¹ All values are nominal dimensions

² Drawing may not be exact representation of product

Note Please contact a Rahn Customer Sales Rep for availability

Note All Wall measurements calculated using SDR 11 - See SDR Chart for other wall thicknesses

Note Flange Thickness may indicate new min/target specs according to ASTM F2880 (specs will change according to specific SDR)

Note Flange Thickness shown is SDR 11



Rahn Plastics Incorporated
 54 Ferris Dr, North Bay
 Ontario, Canada, P1A 4M3
www.rahnplastics.com

(Local) 1-705-495-6777
 (Toll Free) 1-888-433-0111
 (Fax) 1-866-495-6820